

Displacement Pump

3A9391B

EN

For repair of displacement pump in 695 XT, 795 XT, 1095 XT, Mark IV XT, Mark V XT, and Mark VII XT electric airless sprayers. For professional use only.

3300 psi (22.7 MPa, 227 bar) Maximum Working Pressure

Model 2001548
695 XT Standard

Model 2001549
695 XT Pro

Model 2001573
795 XT Standard

Model 2001574
795 XT Pro

Model 2001550
1095 XT Standard

Model 2001551
1095 XT Pro

Model 2001552
Mark IV XT Standard

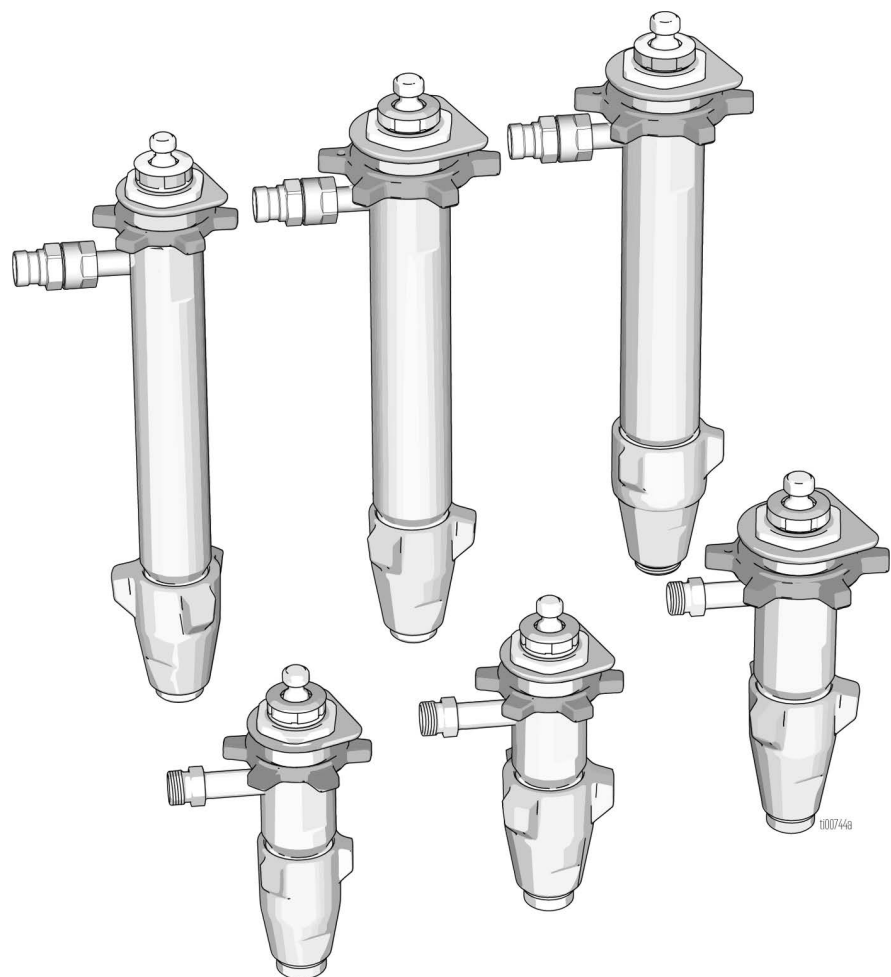
Model 2001553
Mark IV XT Pro

Model 2001554
Mark V XT Standard

Model 2001555
Mark V XT Pro

Model 2001556
Mark VII XT Standard

Model 2001557
Mark VII XT Pro



Important Safety Instructions

Read all warnings and instructions in this manual and all related manuals before servicing. Save these instructions.

Table of Contents

Related Manuals **2**

Warnings **3**

Service **5**

 Pressure Relief Procedure 5

 Pump Repair Kits 5

 Tools Needed 5

 Cleaning and Inspecting Parts 5

Pump Repair **6**

 Disassembling the Pump 6

 Assembling the Pump 8

 Cross-Section Reference 12

Parts **13**

 Pumps 2001550, 2001551 13

 Pumps 2001548, 2001549, 2001573, 2001574 . 14

 Pumps 2001552, 2001553 15

 Pumps 2001554, 2001555 16

 Pump 2001556, 2001557 17

Technical Specifications **18**

California Proposition 65 **18**

Graco Standard Warranty **19**

Related Manuals

Manual in English	Description
3B0070	Sprayer Operation, Parts Manual

Warnings

The following warnings are for the setup, use, grounding, maintenance, and repair of this equipment. The exclamation point symbol alerts you to a general warning and the hazard symbols refer to procedure-specific risks. When these symbols appear in the body of this manual or on warning labels, refer back to these Warnings. Product-specific hazard symbols and warnings not covered in this section may appear throughout the body of this manual where applicable.

WARNING



EQUIPMENT MISUSE HAZARD

Misuse can cause death or serious injury.

- Do not operate the unit when fatigued or under the influence of drugs or alcohol.
- Do not exceed the maximum working pressure or temperature rating of the lowest rated system component. See **Technical Specifications** in all equipment manuals.
- Use fluids and solvents that are compatible with equipment wetted parts. See **Technical Specifications** in all equipment manuals. Read fluid and solvent manufacturer's warnings. For complete information about your material, request Safety Data Sheets (SDSs) from distributor or retailer.
- Do not leave the work area while equipment is energized or under pressure.
- Turn off all equipment and follow the **Pressure Relief Procedure** when equipment is not in use.
- Check equipment daily. Repair or replace worn or damaged parts immediately with genuine manufacturer's replacement parts only.
- Do not alter or modify equipment. Alterations or modifications may void agency approvals and create safety hazards.
- Make sure all equipment is rated and approved for the environment in which you are using it.
- Use equipment only for its intended purpose. Call your distributor for information.
- Route hoses and cables away from traffic areas, sharp edges, moving parts, and hot surfaces.
- Do not kink or over bend hoses or use hoses to pull equipment.
- Keep children and animals away from work area.
- Comply with all applicable safety regulations.

WARNING



MOVING PARTS HAZARD

Moving parts can pinch, cut or amputate fingers and other body parts.

- Keep clear of moving parts.
- Do not operate equipment with protective guards or covers removed.
- Equipment can start without warning. Before checking, moving, or servicing equipment, follow the **Pressure Relief Procedure** and disconnect all power sources.



SKIN INJECTION HAZARD

High-pressure fluid from gun, hose leaks, or ruptured components will pierce skin. This may look like just a cut, but it is a serious injury that can result in amputation. **Get immediate surgical treatment.**

- Do not spray without tip guard and trigger guard installed.
- Engage trigger lock when not spraying.
- Do not point gun at anyone or at any part of the body.
- Do not put your hand over the spray tip.
- Do not stop or deflect leaks with your hand, body, glove, or rag.
- Follow the **Pressure Relief Procedure** when you stop spraying and before cleaning, checking, or servicing equipment.
- Tighten all fluid connections before operating the equipment.
- Check hoses and couplings daily. Replace worn or damaged parts immediately.

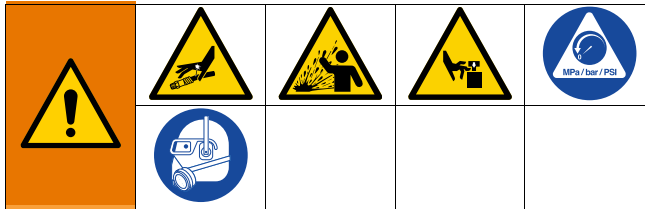


Service

Pressure Relief Procedure



Follow the Pressure Relief Procedure whenever you see this symbol.



This equipment stays pressurized until pressure is manually relieved. To help prevent serious injury from pressurized fluid, such as skin injection, splashing fluid and moving parts, follow the Pressure Relief Procedure when you stop spraying and before cleaning, checking, or servicing the equipment.

1. Engage trigger lock.
2. Turn ON/OFF switch to OFF. Unplug power cord on electrical units.
3. Turn prime valve down to the PRIME position. Leave prime valve down until ready to spray again.
4. Disengage the trigger lock.
5. Hold a metal part of the gun firmly to a grounded metal pail. Trigger the gun to relieve pressure.
6. Engage the trigger lock.
7. If you suspect the spray tip or hose is clogged or that pressure has not been fully relieved after following the steps above:
 - a. Using a wrench, **VERY SLOWLY** loosen tip guard retaining nut or hose end coupling to relieve pressure gradually.
 - b. Loosen the nut or the coupling completely.
 - c. Clear the obstruction in the hose or tip.

Pump Repair Kits

Pump	Repair Kit
2001548 / 2001573	17H838
2001549 / 2001574	17H841
2001550	17H839
2001551	17H842
2001552	17H845 (ceramic balls)
2001553	17H849 (ceramic balls)
2001554	17H846 (ceramic balls)
2001555	17H850 (ceramic balls)
2001556	17H847 (ceramic balls)
2001557	17H851 (ceramic balls)

Tools Needed

- Vise
- 12 in. adjustable, open-end wrench (2)
- Hammer (20 oz maximum)
- Throat Seal Liquid
- Pick or long small screwdriver

Cleaning and Inspecting Parts

Clean and inspect parts. Pay particular attention to the ball seats in the intake valve and piston, which must have no nicks or wear, and to the inside of the sleeve and the outside of the piston rod, which must not be worn or scratched. Replace worn or damaged parts.

NOTE: Remove and clean sleeve when repacking pump.

NOTICE

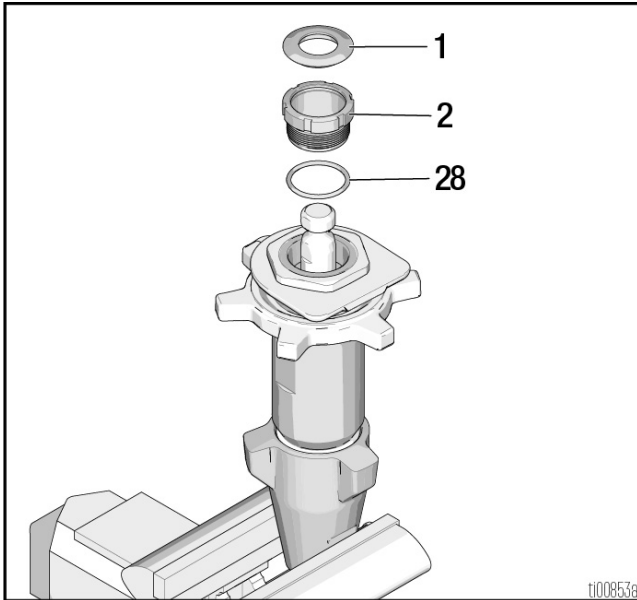
To reduce the risk of damaging sealing surfaces, never use sharp or pointed tools to remove sleeve. If the sleeve cannot be removed easily, return the sleeve and cylinder to a Graco distributor for removal.

Pump Repair

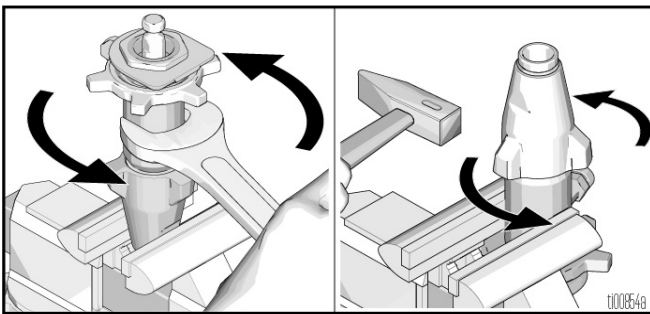
NOTE: DO NOT remove Flange Nut, Pump Flange, or Pump Nut from cylinder

Disassembling the Pump

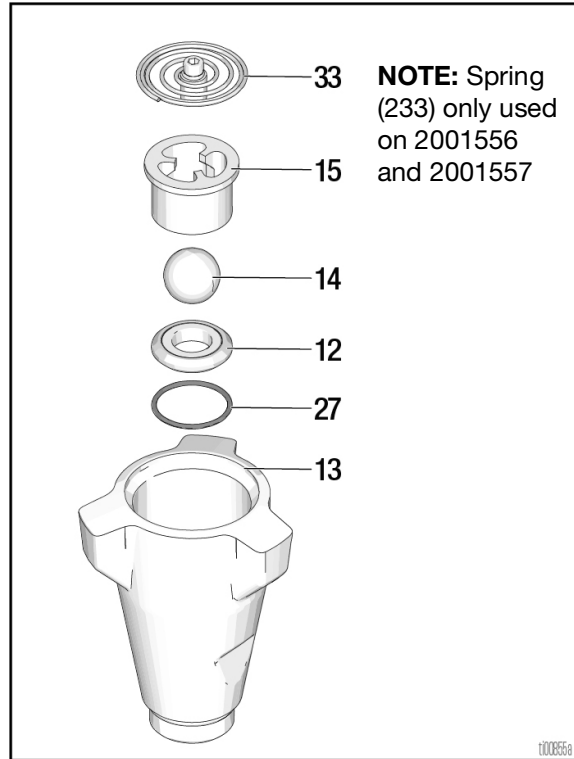
1. Remove throat seal (1), packing nut (2), and o-ring (28).



2. Unscrew intake valve from cylinder.

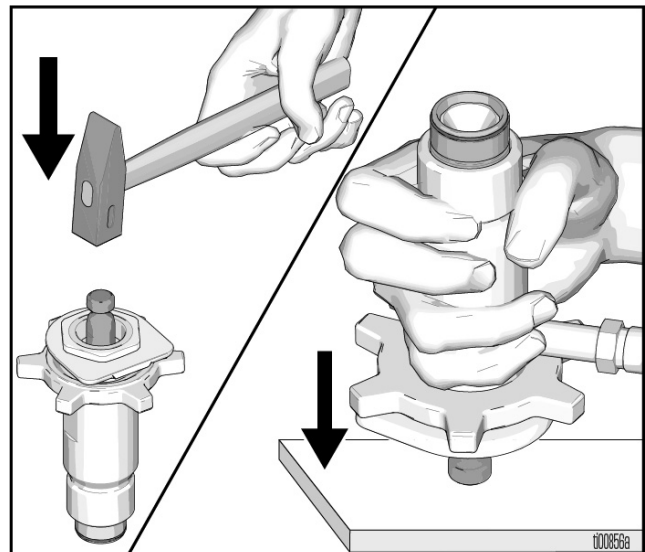


3. Disassemble intake valve. Clean and inspect o-ring (27). **NOTE:** A pick may be required to remove o-ring.

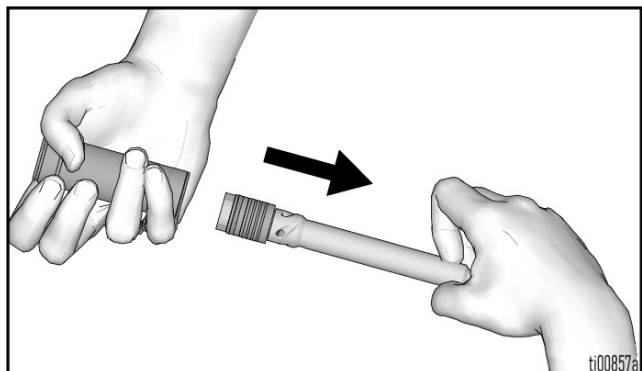


4. Tap piston rod out of cylinder with a hammer or flip over and tap piston rod out against a bench.

NOTE: Sleeve may come out of cylinder with piston rod.



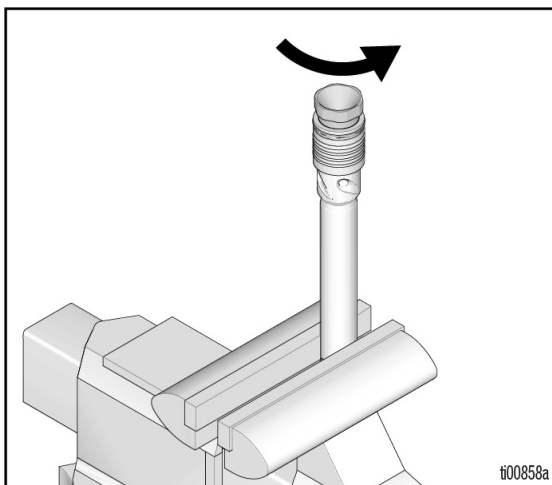
- Remove piston rod from sleeve, or remove sleeve from cylinder. **Mark IV and Mark VII models:** Remove sleeve spacer (32) from sleeve.



NOTICE

To reduce the risk of damaging sealing surfaces, never use sharp or pointed tools to remove sleeve. If the sleeve cannot be removed easily, return the sleeve and cylinder to a Graco distributor for removal.

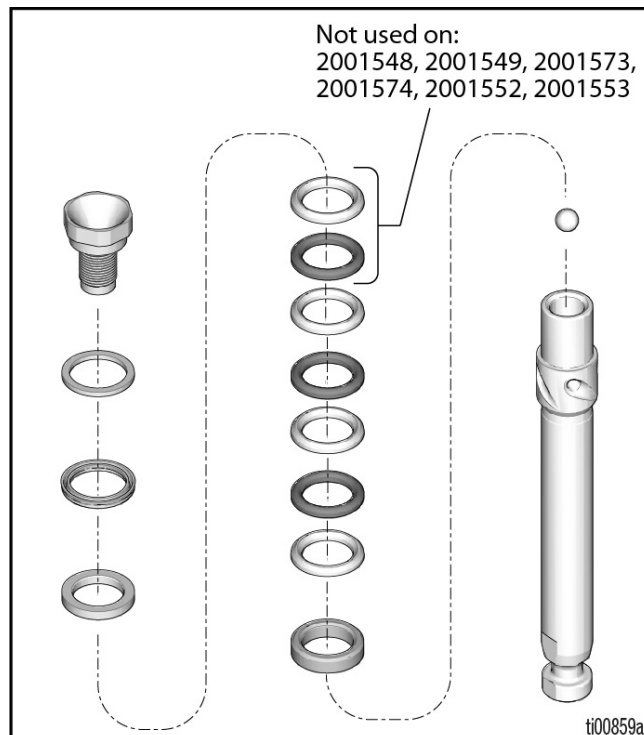
- Unscrew piston valve from piston rod. Clean and inspect parts. The piston has a special thread locking/sealing patch. Do not remove the patch. The patch allows four disassembly/assembly procedures before it is necessary to apply thread sealant to the threads.



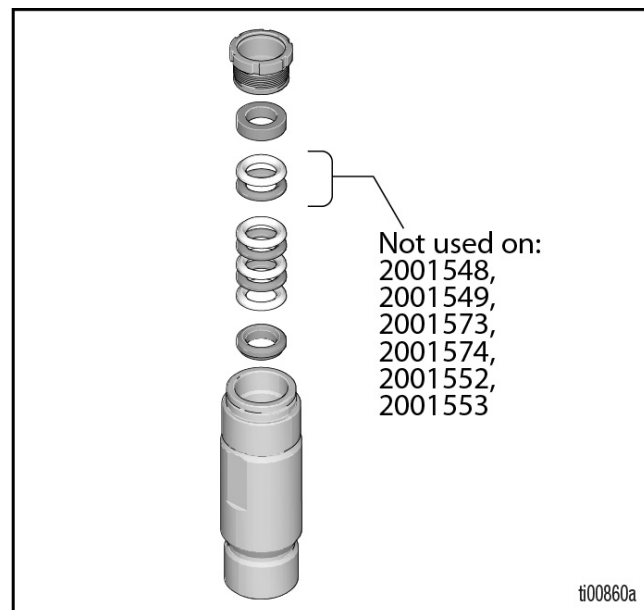
NOTICE

To avoid damage to pump and sprayer, do not clean or wipe the piston threads. Cleaning the piston threads could destroy the special sealing patch and cause the piston to come loose during operation. Use thread sealant if unsure about the effectiveness of the thread patch.

- Remove packings and glands from piston rod.

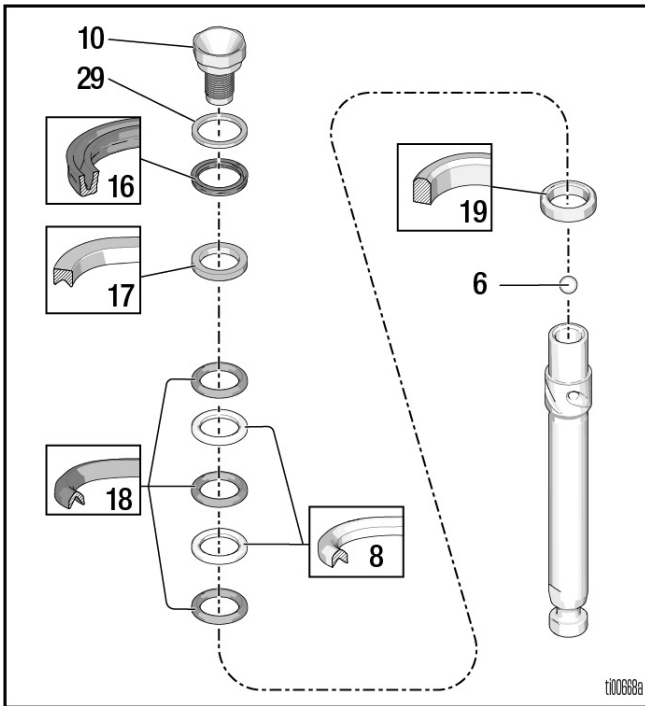


- Remove throat packings and glands from cylinder. Discard throat packings and glands.

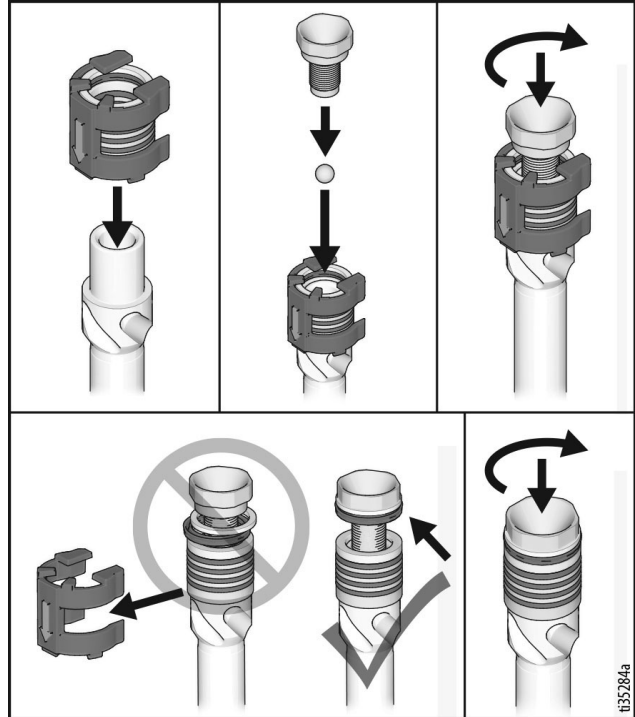


Assembling the Pump

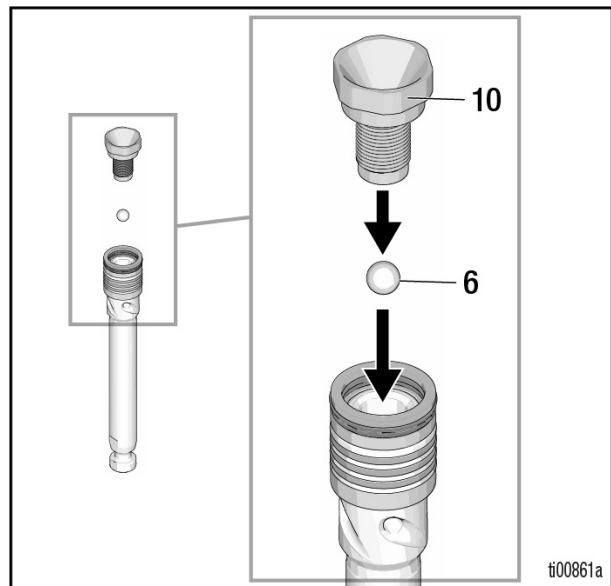
- For all non-QuikPak Repair Kits:
Soak all leather packings in SAE 30W oil for 1 hour minimum prior to assembly. Stack male gland (19) on piston rod. Alternately stack UHMWPE (8) and leather (18) packings (note orientation) on piston rod. Install female gland (17). Install piston wiper (16) (note orientation) and backup washer (29) on piston valve (10), threads are good for four repackings. Use thread sealant on piston valve threads after four repackings.



- For all QuikPak™ Piston Repair Kits (provided pre-soaked in oil).

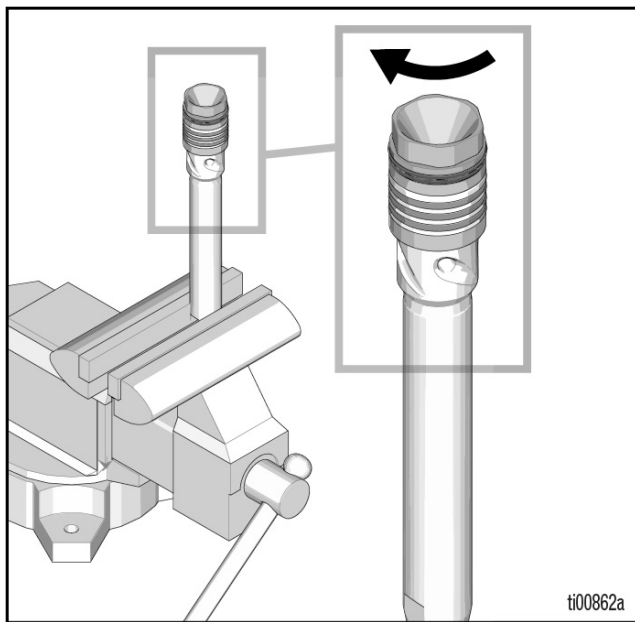


- Install ball (6) in piston rod. If thread sealant is applied to piston valve threads, make sure that none gets on ball.

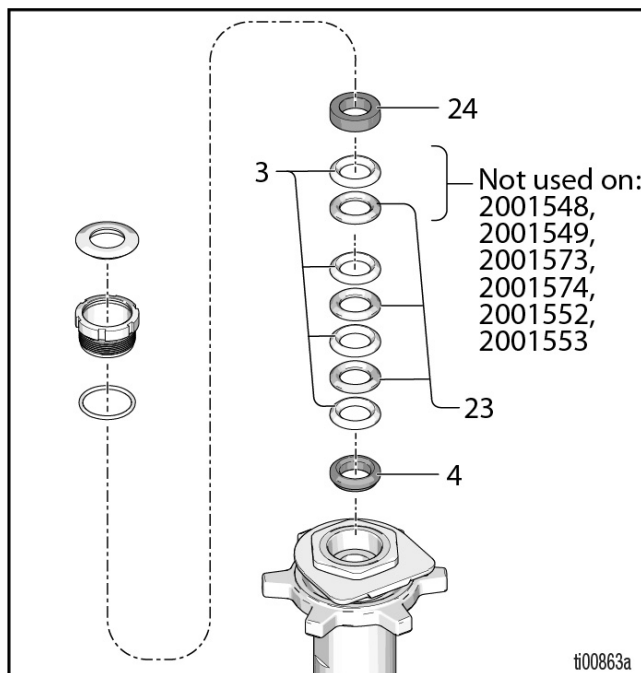


4. Tighten piston valve to piston rod as specified:

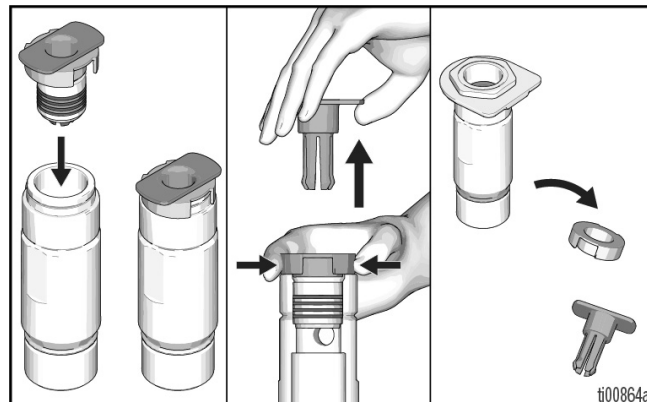
Models	Torque
2001548, 2001549, 2001573, 2001574, 2001552, 2001553	27 ± 3 ft-lb. (36.6 ± 4.1 N•m)
2001550, 2001551, 2001554, 2001555, 2001556, 2001557	55 ± 3 ft-lb. (74.6 ± 4.1 N•m)



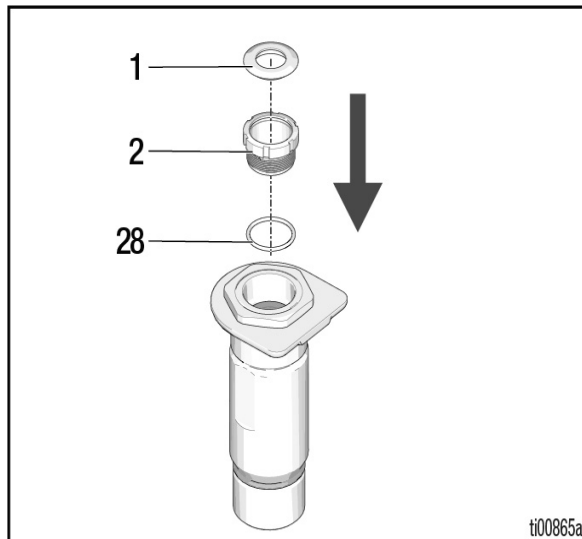
5. A) For all non-QuikPak Repair Kits. Soak all leather packings in SAE 30W oil for one hour minimum prior to assembly. Place male gland (4) in cylinder. Alternately stack UHMWPE (3) and leather packings (23) (note orientation). Place female gland (24) in top of cylinder seat packings.



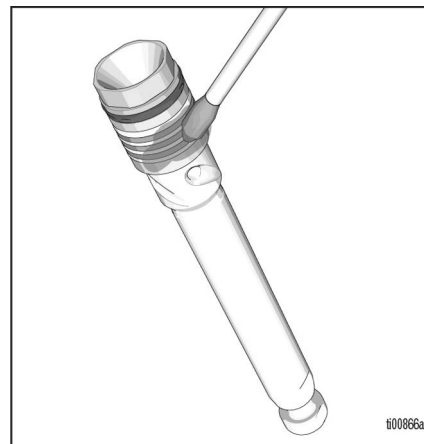
6. For all QuikPak Piston Repair Kits (provided pre-soaked in oil).



7. Install seal (1) into packing nut (2). Install o-ring (28) onto packing nut. Loosely install packing nut into cylinder.

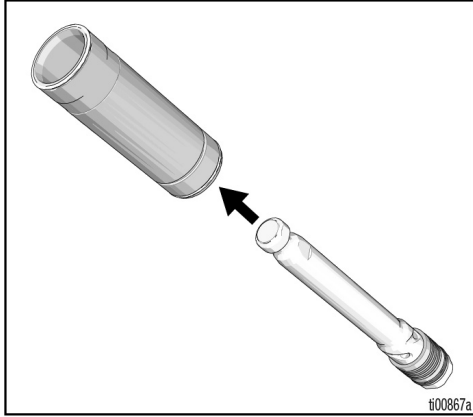


8. Grease piston packings.

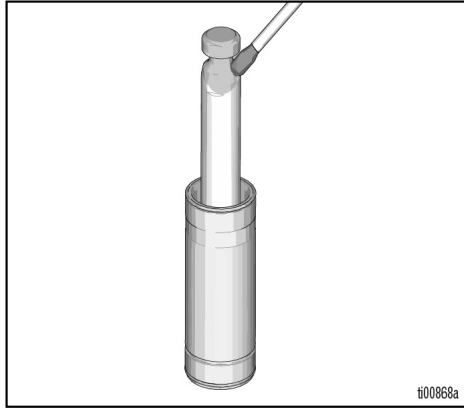


NOTE: Do not slide piston assembly into top of sleeve as this may damage piston packing.

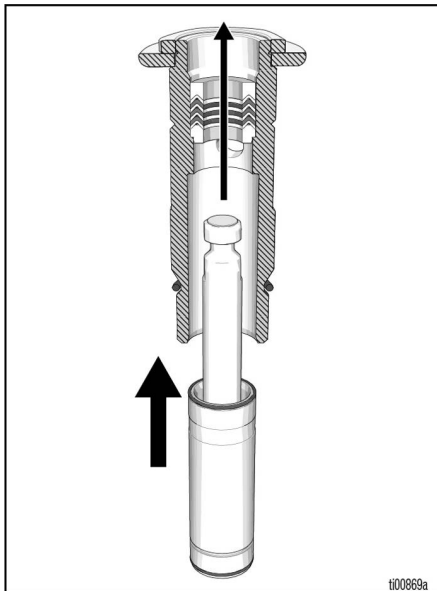
9. Slide piston assembly (with force) into bottom of sleeve.



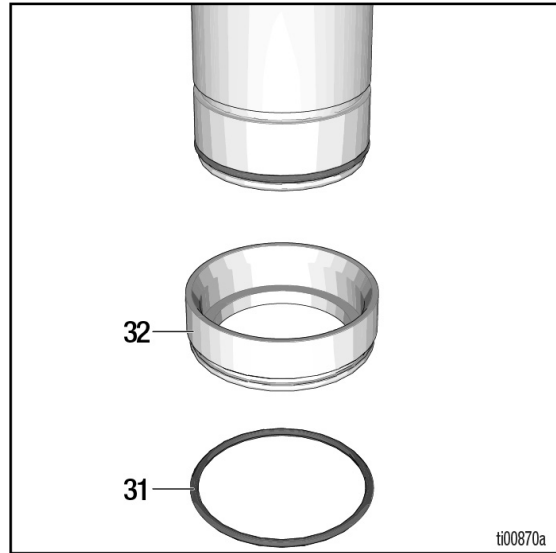
10. Grease top inch or two of piston rod that will go through the cylinder throat packings.



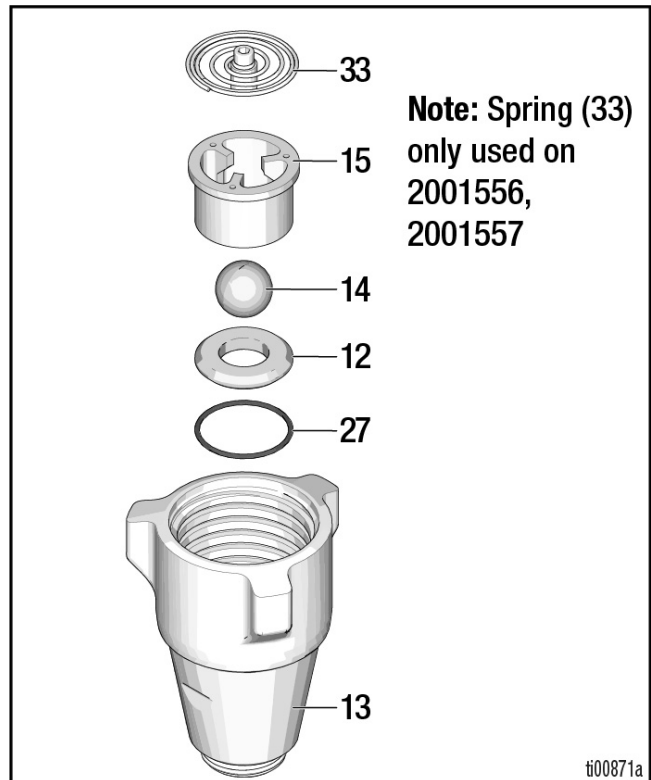
11. Grease o-rings (21 and 34) and place on sleeve. Slide sleeve/piston rod assembly into bottom of cylinder. Replace o-ring (7) if desired.



12. **Mark IV, Mark VII models:** Install o-ring (31) on sleeve spacer (32) and install sleeve spacer on sleeve.

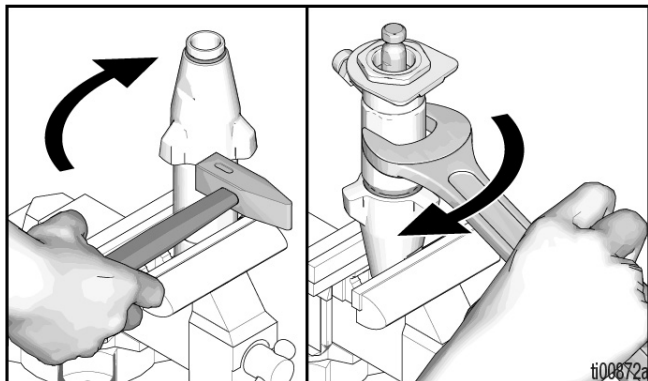


13. Reassemble intake valve with new o-ring (27), seat (12) and ball (14). Seat may be flipped over and used on other side. Clean seat thoroughly.



14. Install intake valve on cylinder. If a wrench is used torque as follows:

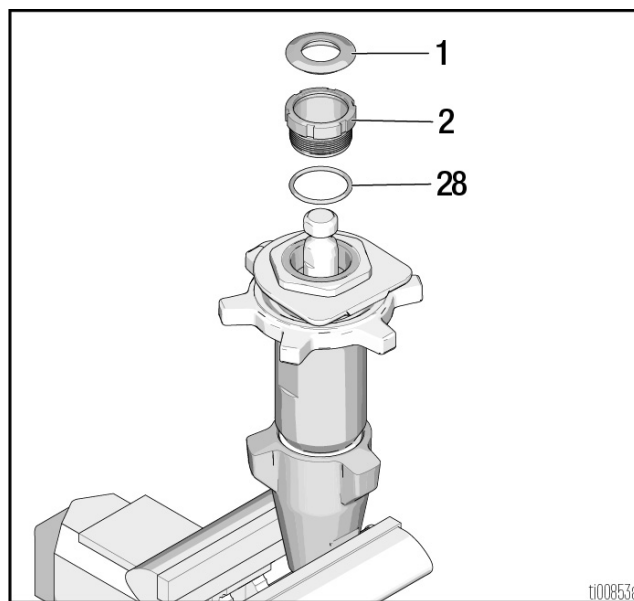
Models	Torque
2001548, 2001549, 2001573, 2001574, 2001552, 2001553	70 ± 5 ft-lb (95 ± 7 N•m)
2001550, 2001551, 2001554, 2001555, 2001556, 2001557	80 ± 5 ft-lb (109 ± 7 N•m)



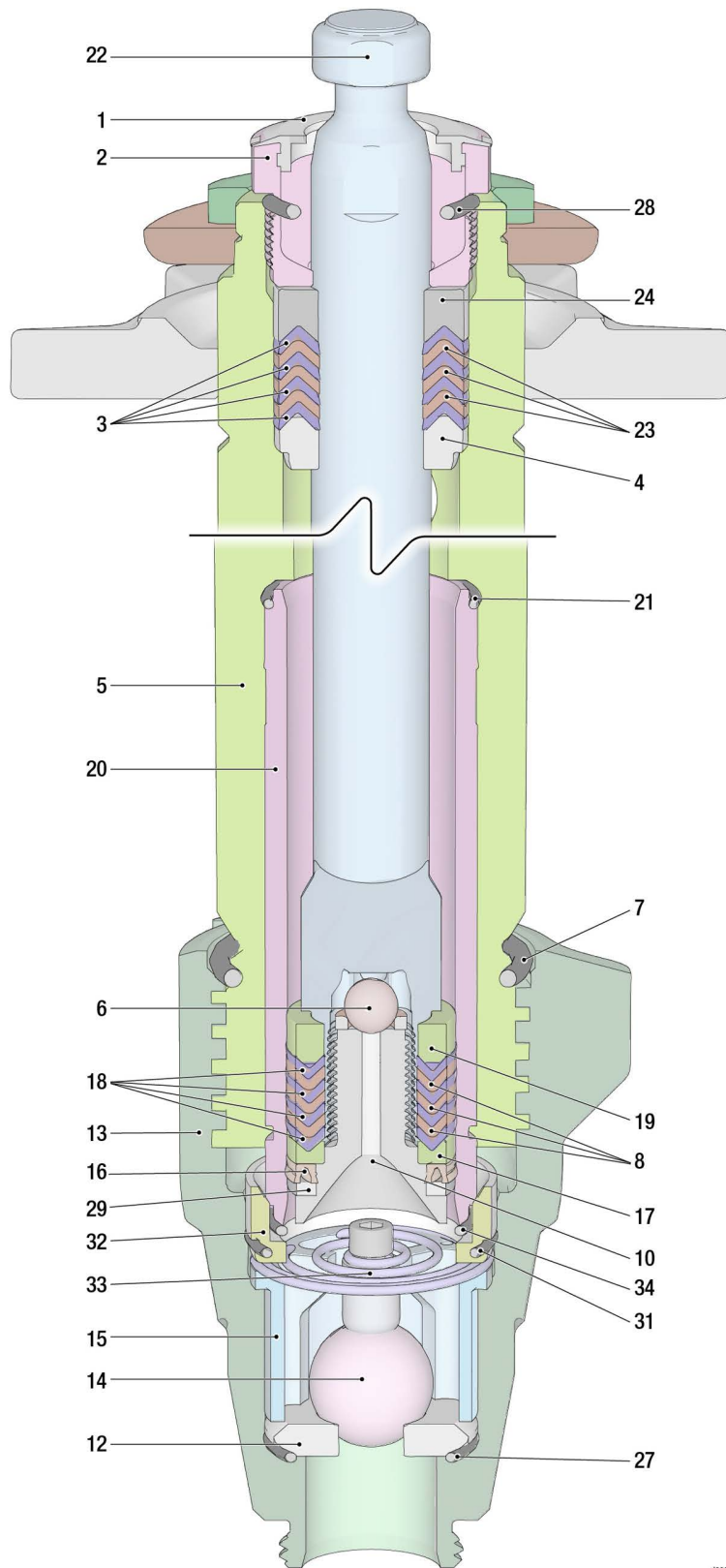
15. Torque packing nut (2) as follows:

Models	Torque
2001548, 2001549, 2001573, 2001574, 2001552, 2001553	100 ± 10 in-lb (11.3 ± 1.1 N•m)
2001550, 2001551, 2001554, 2001555, 2001556, 2001557	140 ± 10 in-lb (15.8 ± 1.1 N•m)

16. Remove o-ring (28) when pump packings begin to leak after extended use. Then tighten packing nut down until leakage stops or lessens. This allows approximately 100 gallons of additional operation before a repacking is required.



Cross-Section Reference



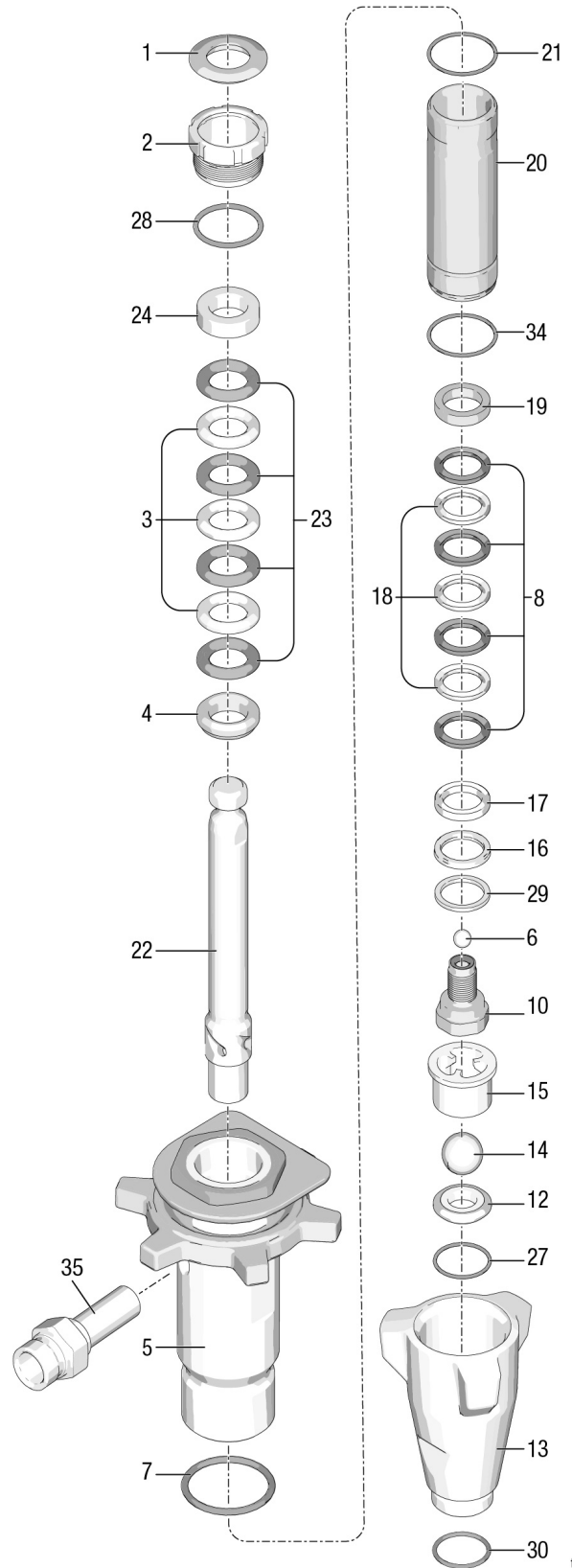
000638

Parts

Pumps 2001550, 2001551

Ref.	Part	Description	Qty.
1*	183171	SEAL, throat	1
2	193032	NUT, packing	1
3*	183175	V-PACKING, throat, V-Max, UHMWPE, blue	3
4*	183178	GLAND, male, throat	1
5		CYLINDER, pump	1
	2001531	Model 2001550	
	2001532	Model 2001551	
6*	101947	BALL, check	1
7*	156633	PACKING, o-ring	1
8*		V-PACKING, piston, V-MAX, UHMWPE, blue	4
	193125	Model 2001550	
	128779	Model 2001551	
10	24U993	VALVE, piston	1
12	244199	KIT, seat, carbide, <i>includes 14, 27</i>	1
13	15E654	VALVE, intake (foot)	1
14*	102972	BALL, check, inlet	1
15	193027	GUIDE, ball	1
16*	118504	WIPER, piston	1
17*	15C990	GLAND, female, piston	1
18*		V-PACKING, brown, piston	3
	15E329	Model 2001550	
	128296	Model 2001551	
19*	15C989	GLAND, male, piston	1
20		SLEEVE, cylinder	1
	248210	Model 2001550	
	17H859	Model 2001551	
21*	107098	O-RING, ptfе	1
22		ROD, piston	1
	2001539	Model 2001550	
	2001540	Model 2001551	
23*	193124	V-PACKING, leather, throat	4
24*	183185	GLAND, female, throat	1
27*	108526	O-RING, ptfе	1
28*	C20987	O-RING	1
29*	15C998	WASHER, backup	1
30*	118494	O-RING, fluoroelastomer	1
34*	17E792	O-RING, FX90	1
35	20B230	FITTING, Pump, QD	1

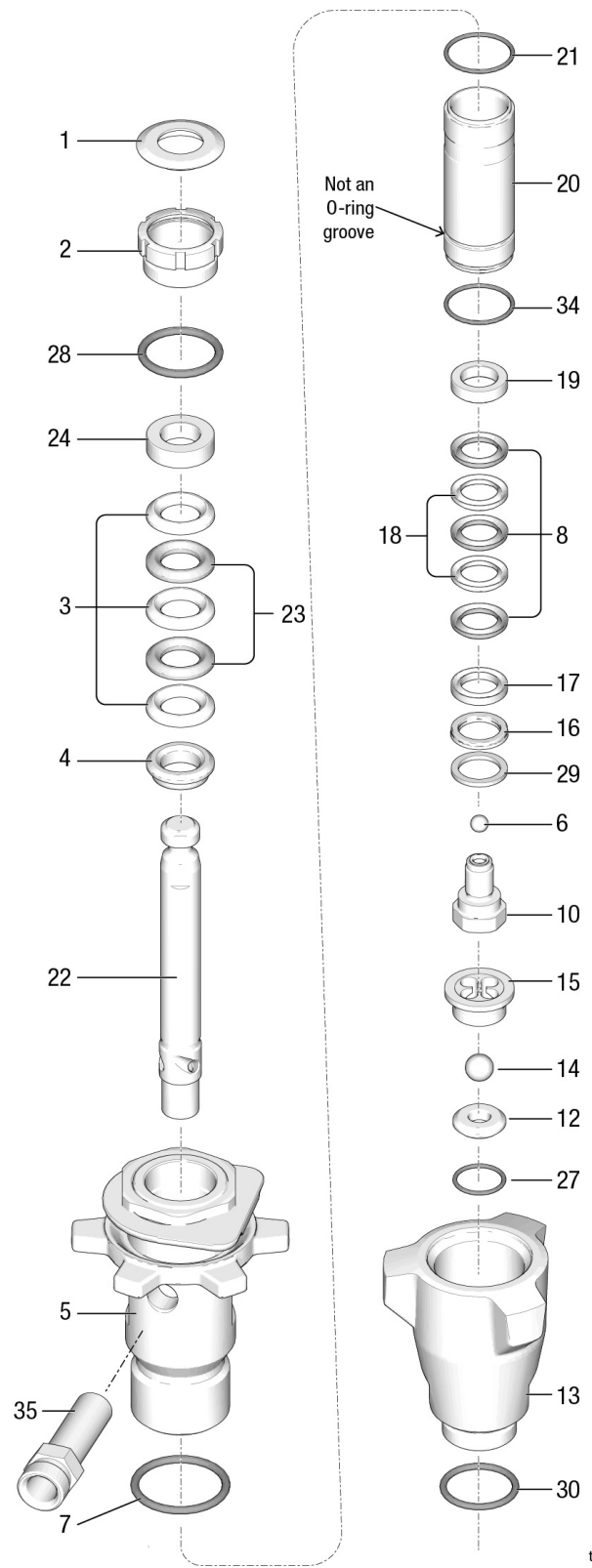
* These parts are also included in Repair Kit 17H839 and 17H842, which may be purchased separately.



Pumps 2001548, 2001549, 2001573, 2001574

Ref.	Part	Description	Qty.
1*	179810	SEAL, throat	1
2	193046	NUT, packing	1
3*	192692	V-PACKING, throat, V-Max, UHMWPE, blue	3
4*	15C987	GLAND, male, throat	1
5		CYLINDER, pump	1
	2001527	Model 2001548, 2001573	
	2001528	Model 2001549, 2001574	
6*	105444	BALL, check	1
7*	156593	PACKING, o-ring	1
8*		V-PACKING, piston, V-MAX, UHMWPE, blue	3
	192693	Model 2001548, 2001573	
	18A049	Model 2001549, 2001574	
10	287877	VALVE, piston	1
12	239922	KIT, seat, carbide, <i>includes 14, 15, 27</i>	1
13		VALVE, intake (foot)	1
	15C785	Model 2001548, 2001549	
	19D861	Model 2001573, 2001574	
14*	105445	BALL, check, inlet	1
15	192624	GUIDE, ball	1
16*	118503	WIPER, piston	1
17*	178969	GLAND, female, piston	1
18*		V-PACKING, brown, piston	2
	178939	Model 2001548, 2001573	
	18A011	Model 2001549, 2001574	
19*	196880	GLAND, male, piston	1
20		SLEEVE, cylinder	1
	248209	Model 2001548, 2001573	
	17H864	Model 2001549, 2001574	
21*	108526	O-RING, ptfe	1
22		ROD, piston	1
	2001537	Model 2001548, 2001573	
	2001538	Model 2001549, 2001574	
23*	178940	V-PACKING, leather, throat	2
24*	15C988	GLAND, female, throat	1
27*	107079	O-RING, ptfe	1
28*	158776	O-RING	1
29*	15C997	WASHER, backup	1
30*	118494	O-RING, fluoroelastomer	1
34*	17V093	O-RING, FX90	1
35	20B230	FITTING, Pump, QD	1

* These parts are also included in Repair Kit 17H838 and 17H841, which may be purchased separately.

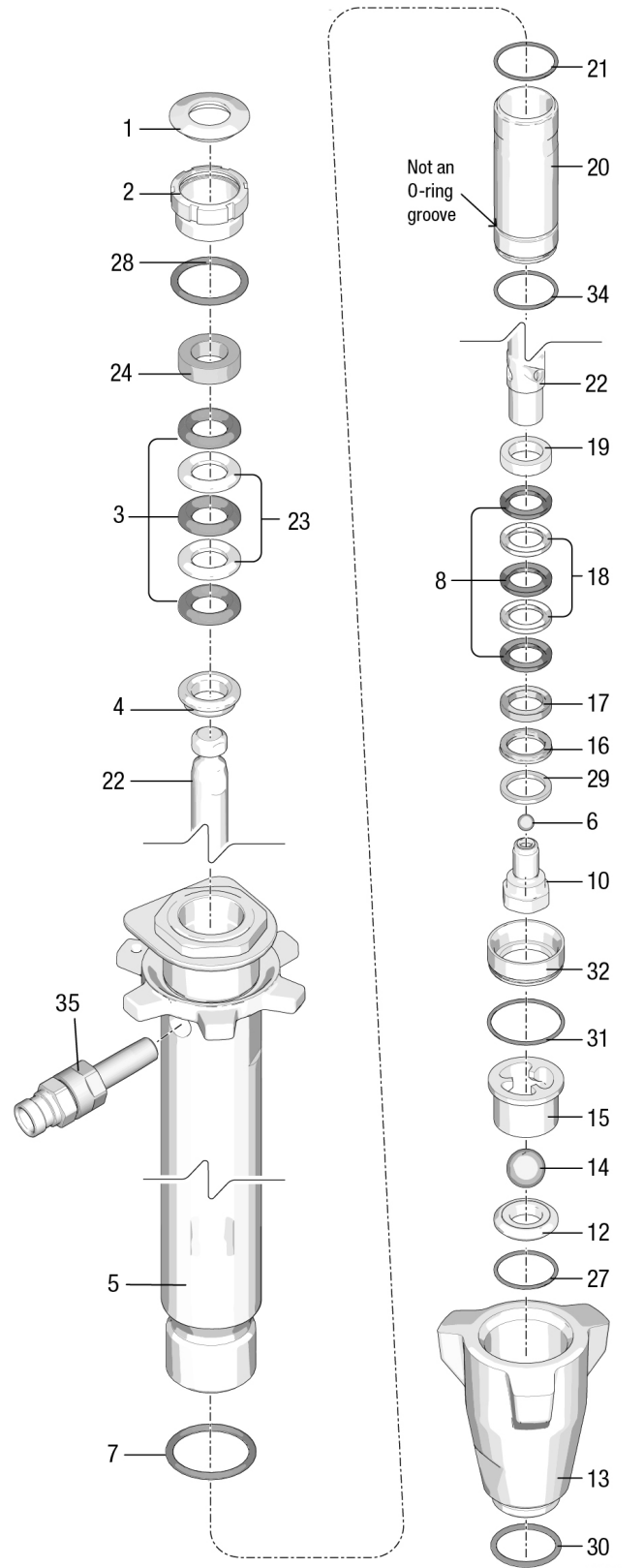


ti00930a

Pumps 2001552, 2001553

Ref.	Part	Description	Qty.
1*	179810	SEAL, throat	1
2	193046	NUT, packing	1
3*	192692	V-PACKING, throat, V-Max, UHMWPE, blue	3
4*	15C987	GLAND, male, throat	1
5	2001529	Model 2001552	1
	2001530	Model 2001553	1
6*	17R145	BALL, check (Ceramic)	1
7*	156633	PACKING, o-ring	1
8*	192693	Model 2001552	3
	18A049	Model 2001553	3
10	287877	VALVE, piston	1
12	244571	KIT, seat, carbide, <i>includes 14, 27</i>	1
13	287878	VALVE, intake (foot)	1
14*	17Y533	BALL, check, inlet	1
15	196967	GUIDE, ball	1
16*	118503	WIPER, piston	1
17*	178969	GLAND, female, piston	1
18*	178939	Model 2001552	2
	18A011	Model 2001553	2
19*	196880	GLAND, male, piston	1
20	248209	Models 2001552	1
	17H864	Models 2001553	1
21*	108526	O-RING, ptfе	1
22	2001541	Models 2001552	1
	2001542	Models 2001553	1
23*	178940	V-PACKING, leather, throat	2
24*	15C988	GLAND, female, throat	1
27*	108526	O-RING, ptfе	1
28*	158776	O-RING	1
29*	15C997	WASHER, backup	1
30*	118494	O-RING, fluoroelastomer	1
31	17E792	O-RING	1
32	15G494	SPACER	1
34*	17V093	O-RING, FX90	1
35	2004023	KIT, valve, check, outlet pump	1

* These parts are also included in Repair Kit 17H845 and 17H849 (stainless steel balls), which may be purchased separately.

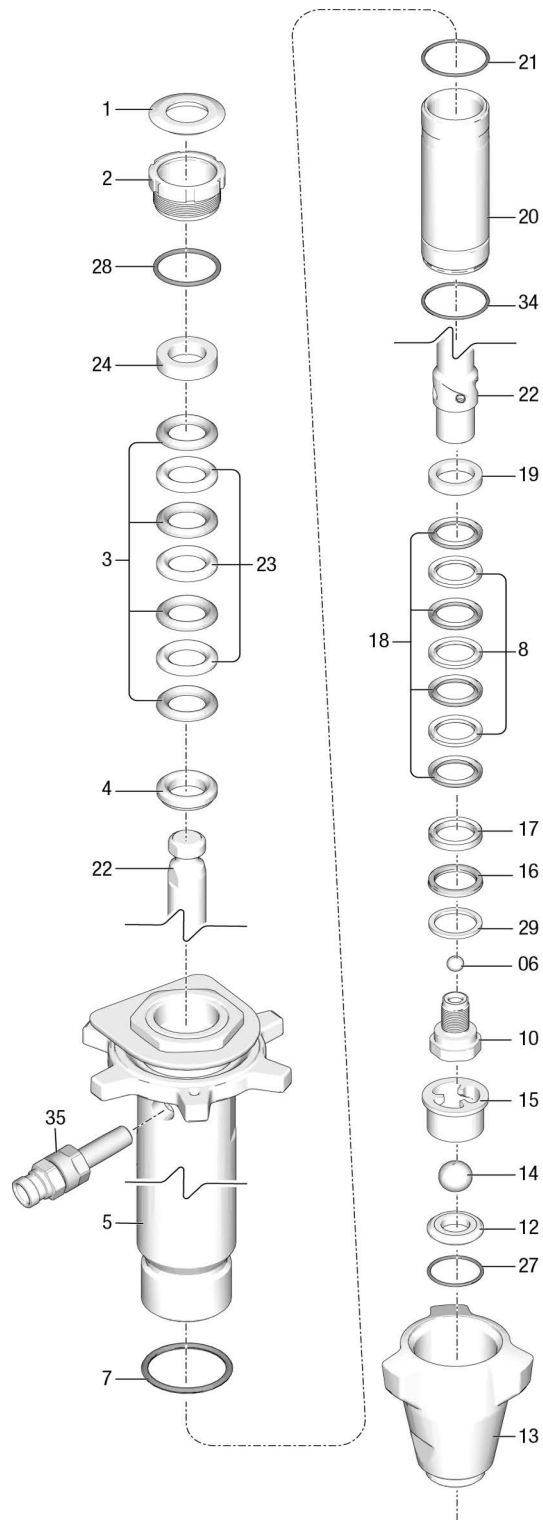


ti00671a

Pumps 2001554, 2001555

Ref.	Part	Description	Qty
1*	183171	SEAL, throat	1
2	193032	NUT, packing	1
3*	193124	V-PACKING, throat, V-Max, UHMWPE, blue	4
4*	15C989	GLAND, male, throat	1
5	2001533	CYLINDER, pump Model 2001554	1
	2001534	Model 2001555	1
6*	124249	BALL, check (Ceramic)	1
7*	156633	PACKING, o-ring	1
8*	193125	V-PACKING, piston, V-MAX, UHMWPE, blue Model 2001554	4
	128779	Model 2001555	1
10	24U993	VALVE, piston	1
12	244571	KIT, seat, carbide, <i>includes 14, 27</i>	1
13	196753	VALVE, intake (foot)	1
14*	17Y533	BALL, check, inlet	1
15	196967	GUIDE, ball	1
16*	118504	WIPER, piston	1
17*	183185	GLAND, female, piston	1
18*	15E329	V-PACKING, brown, piston Model 2001554	3
	128296	Model 2001555	1
19*	183178	GLAND, male, piston	1
20	248210	SLEEVE, cylinder Model 2001554	1
	257031	Model 2001555	1
21*	107098	O-RING, ptfе	1
22	2001544	ROD, piston Model 2001554	1
	2001545	Model 2001555	1
23*	183175	V-PACKING, leather, throat	3
24*	15C990	GLAND, female, throat	1
27*	108526	O-RING, ptfе	1
28*	C20987	O-RING	1
29*	15C998	WASHER, backup	1
34*	17E792	O-RING, FX90	1
35	2004023	KIT, valve, check, outlet pump	1

* These parts are also included in Repair Kit 17H850 and 17H846 (ceramic balls), which may be purchased separately.

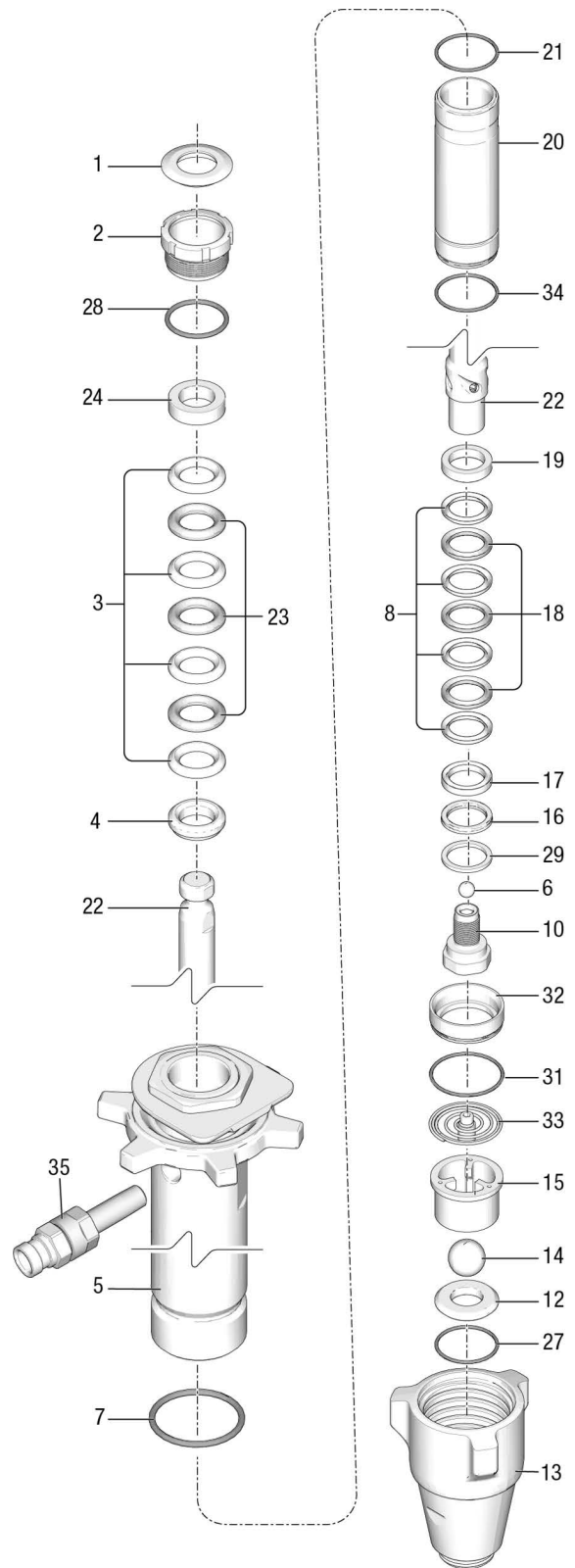


ti00821a

Pump 2001556, 2001557

Ref.	Part	Description	Qty
1*	183171	SEAL, throat	1
2	193032	NUT, packing	1
3*	193124	V-PACKING, throat, V-Max, UHMWPE, blue	4
4*	15C989	GLAND, male, throat	1
5		CYLINDER, pump	1
	2001535	Model 2001556	
	2001536	Model 2001557	
6*	124249	BALL, check (Ceramic)	1
7	160325	PACKING, o-ring	1
8*		V-PACKING, piston, V-MAX, UHMWPE, blue	4
	193125	Model 2001556	
	128779	Model 2001557	
10	24U993	VALVE, piston	1
12	24N013	KIT, seat, carbide, <i>includes 14, 27, 33</i>	1
13	15A303	VALVE, intake (foot)	1
14*	17R046	BALL, check, inlet	1
15	16M658	GUIDE, ball	1
16*	118504	WIPER, piston	1
17*	183185	GLAND, female, piston	1
18*		V-PACKING, brown, piston	3
	15E329	Model 2001556	
	128296	Model 2001557	
19*	183178	GLAND, male, piston	1
20		SLEEVE, cylinder	1
	248210	Model 2001556	
	257031	Model 2001557	
21*	107098	O-RING, ptfе	1
22		ROD, piston	1
	2001546	Model 2001556	
	2001547	Model 2001557	
23*	183175	V-PACKING, leather, throat	3
24*	15C990	GLAND, female, throat	1
27*	107098	O-RING, ptfе	1
28*	C20987	O-RING	1
29*	15C998	WASHER, backup	1
31	17E793	O-RING	1
32	16M291	SPACER	1
33	24E027	SPRING, intake	1
34*	17E792	O-RING, FX90	1
35	2004023	KIT, valve, check, outlet pump	1

* These parts are also included in Repair Kit 17H847 and 17H851 (ceramic balls), which may be purchased separately.



ti00672a

Technical Specifications

Displacement Pump		
	US	Metric
Maximum fluid working pressure	3300 psi	227 bar, 22.7 MPa
Inlet/Outlet Sizes		
Fluid inlet size	1-11.5 NPSM	
Fluid outlet size	3/8 npt (f)	
Materials of Construction		
Wetted materials on all models	Stainless steel, PTFE, leather, nylon, nickel and zinc-plated carbon steel, tungsten carbide, chrome plating, fluoroelastomer, acetal, polyethylene, ceramic, buna-n, elastomer, silver solder	
Notes		
All trademarks or registered trademarks are the property of their respective owners.		

California Proposition 65

CALIFORNIA RESIDENTS

 **WARNING:** Cancer and reproductive harm – www.P65warnings.ca.gov.

Graco Standard Warranty

Graco warrants all equipment referenced in this document which is manufactured by Graco and bearing its name to be free from defects in material and workmanship on the date of sale to the original purchaser for use. With the exception of any special, extended, or limited warranty published by Graco, Graco will, for a period of twelve months from the date of sale, repair or replace any part of the equipment determined by Graco to be defective. This warranty applies only when the equipment is installed, operated and maintained in accordance with Graco's written recommendations.

This warranty does not cover, and Graco shall not be liable for general wear and tear, or any malfunction, damage or wear caused by faulty installation, misapplication, abrasion, corrosion, inadequate or improper maintenance, negligence, accident, tampering, or substitution of non-Graco component parts. Nor shall Graco be liable for malfunction, damage or wear caused by the incompatibility of Graco equipment with structures, accessories, equipment or materials not supplied by Graco, or the improper design, manufacture, installation, operation or maintenance of structures, accessories, equipment or materials not supplied by Graco.

This warranty is conditioned upon the prepaid return of the equipment claimed to be defective to an authorized Graco distributor for verification of the claimed defect. If the claimed defect is verified, Graco will repair or replace free of charge any defective parts. The equipment will be returned to the original purchaser transportation prepaid. If inspection of the equipment does not disclose any defect in material or workmanship, repairs will be made at a reasonable charge, which charges may include the costs of parts, labor, and transportation.

THIS WARRANTY IS EXCLUSIVE, AND IS IN LIEU OF ANY OTHER WARRANTIES, EXPRESS OR IMPLIED, INCLUDING BUT NOT LIMITED TO WARRANTY OF MERCHANTABILITY OR WARRANTY OF FITNESS FOR A PARTICULAR PURPOSE.

Graco's sole obligation and buyer's sole remedy for any breach of warranty shall be as set forth above. The buyer agrees that no other remedy (including, but not limited to, incidental or consequential damages for lost profits, lost sales, injury to person or property, or any other incidental or consequential loss) shall be available. Any action for breach of warranty must be brought within two (2) years of the date of sale.

GRACO MAKES NO WARRANTY, AND DISCLAIMS ALL IMPLIED WARRANTIES OF MERCHANTABILITY AND FITNESS FOR A PARTICULAR PURPOSE, IN CONNECTION WITH ACCESSORIES, EQUIPMENT, MATERIALS OR COMPONENTS SOLD BUT NOT MANUFACTURED BY GRACO. These items sold, but not manufactured by Graco (such as electric motors, switches, hose, etc.), are subject to the warranty, if any, of their manufacturer. Graco will provide purchaser with reasonable assistance in making any claim for breach of these warranties.

In no event will Graco be liable for indirect, incidental, special or consequential damages resulting from Graco supplying equipment hereunder, or the furnishing, performance, or use of any products or other goods sold hereto, whether due to a breach of contract, breach of warranty, the negligence of Graco, or otherwise.

FOR GRACO CANADA CUSTOMERS

The Parties acknowledge that they have required that the present document, as well as all documents, notices and legal proceedings entered into, given or instituted pursuant hereto or relating directly or indirectly hereto, be drawn up in English. Les parties reconnaissent avoir convenu que la rédaction du présente document sera en Anglais, ainsi que tous documents, avis et procédures judiciaires exécutés, donnés ou intentés, à la suite de ou en rapport, directement ou indirectement, avec les procédures concernées.

Graco Information

For the latest information about Graco products, visit www.graco.com.

For patent information, see www.graco.com/patents.

TO PLACE AN ORDER, contact your Graco distributor or call 1-800-690-2894 to identify the nearest distributor.

*All written and visual data contained in this document reflects the latest product information available at the time of publication.
Graco reserves the right to make changes at any time without notice.*

Original instructions. This manual contains English. MM 3A9391

Graco Headquarters: Minneapolis

International Offices: Belgium, China, Japan, Korea

GRACO INC. AND SUBSIDIARIES • P.O. BOX 1441 • MINNEAPOLIS MN 55440-1441 • USA
Copyright 2023, Graco Inc. All Graco manufacturing locations are registered to ISO 9001.

www.graco.com
Revision B, April 2024